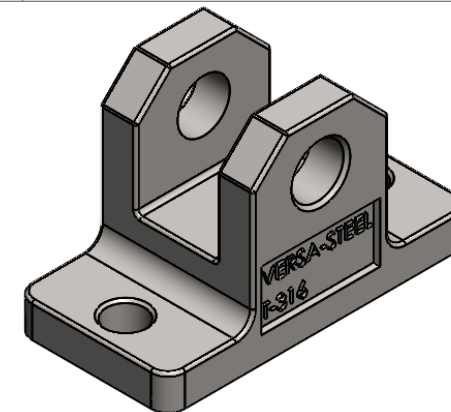
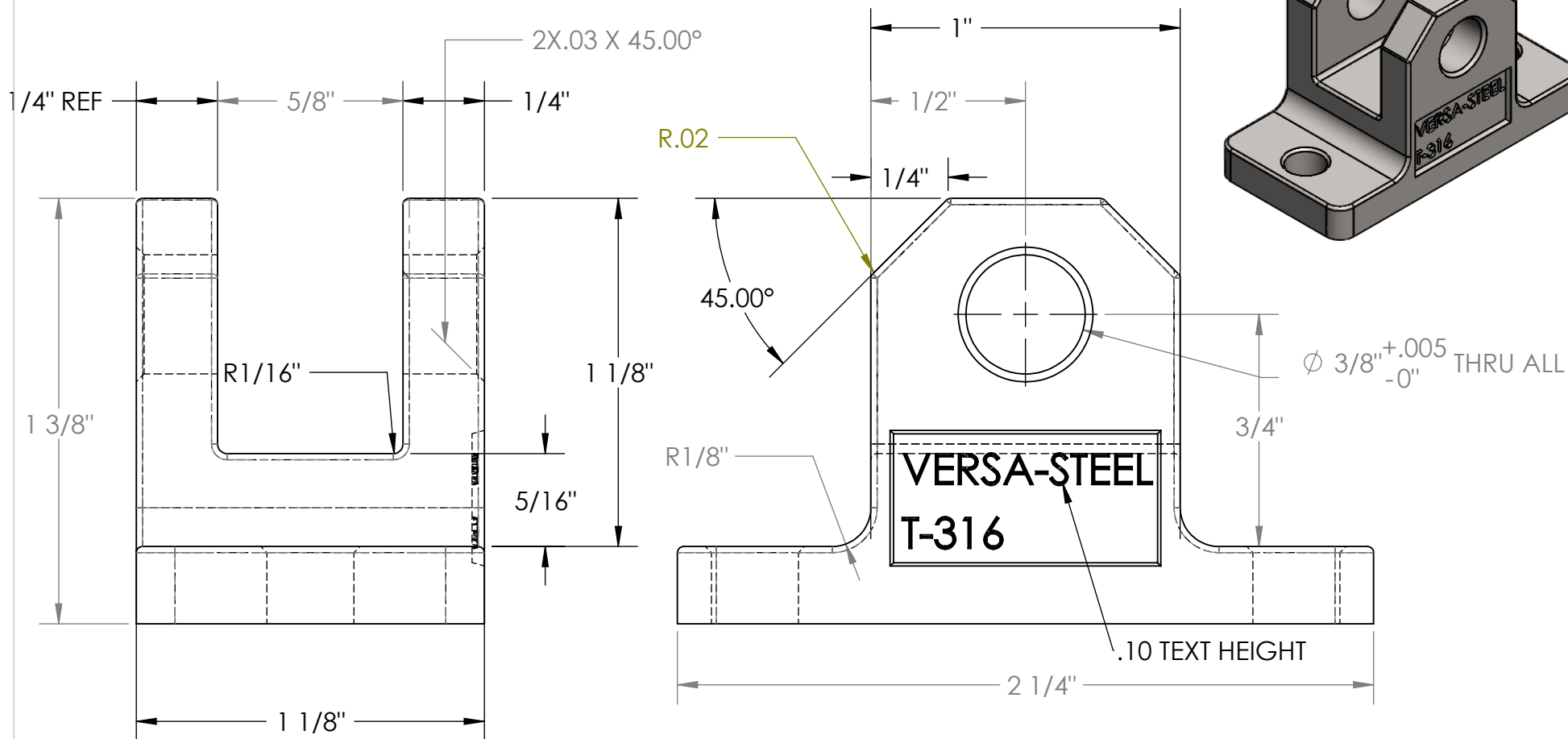


PART NUMBER	DESCRIPTION	MATERIAL	WEIGHT	INVENTORY	VENDOR
1001294	MOUNT, GAS SPRING, HUCK, 316	T-316	0.37		



PROPRIETARY AND CONFIDENTIAL

THE INFORMATION CONTAINED IN THIS DRAWING IS THE SOLE PROPERTY OF VERSA-STEEL, INC. ANY REPRODUCTION IN PART OR AS A WHOLE WITHOUT THE WRITTEN PERMISSION OF VERSA-STEEL, INC. IS PROHIBITED.

CASTING TOLERANCE UNLESS NOTED
**DIMENSIONAL TOLERANCES PER
 ISO 8062-1994 & SFSA 2000**
 CT1-2 for castings < 1"
 CT2-3 for castings > 1"

**CASTING SURFACE ACCEPTANCE PER
 ASTM 802 A LEVEL 1**

MATERIAL
T-316

FINISH
MILL

DO NOT SCALE DRAWING

	NAME	DATE
DRAWN	E.BAILIFF	2012-11-1
CHECKED		
ENG APPR.		
MFG APPR.		
Q.A.		

COMMENTS:

Versa-Steel, Inc
 Portland, Oregon USA
 Ph 503-287-9822

Description: MOUNT, GAS SPRING, HUCK, 316

Part Number: 1001294

SIZE A	DWG. NO. 1001294	REV.
------------------	----------------------------	------

SCALE:2:1	WEIGHT: 0.37 LBS	SHEET 1 OF 1
-----------	------------------	--------------