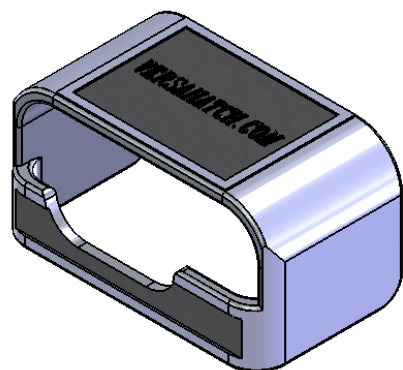
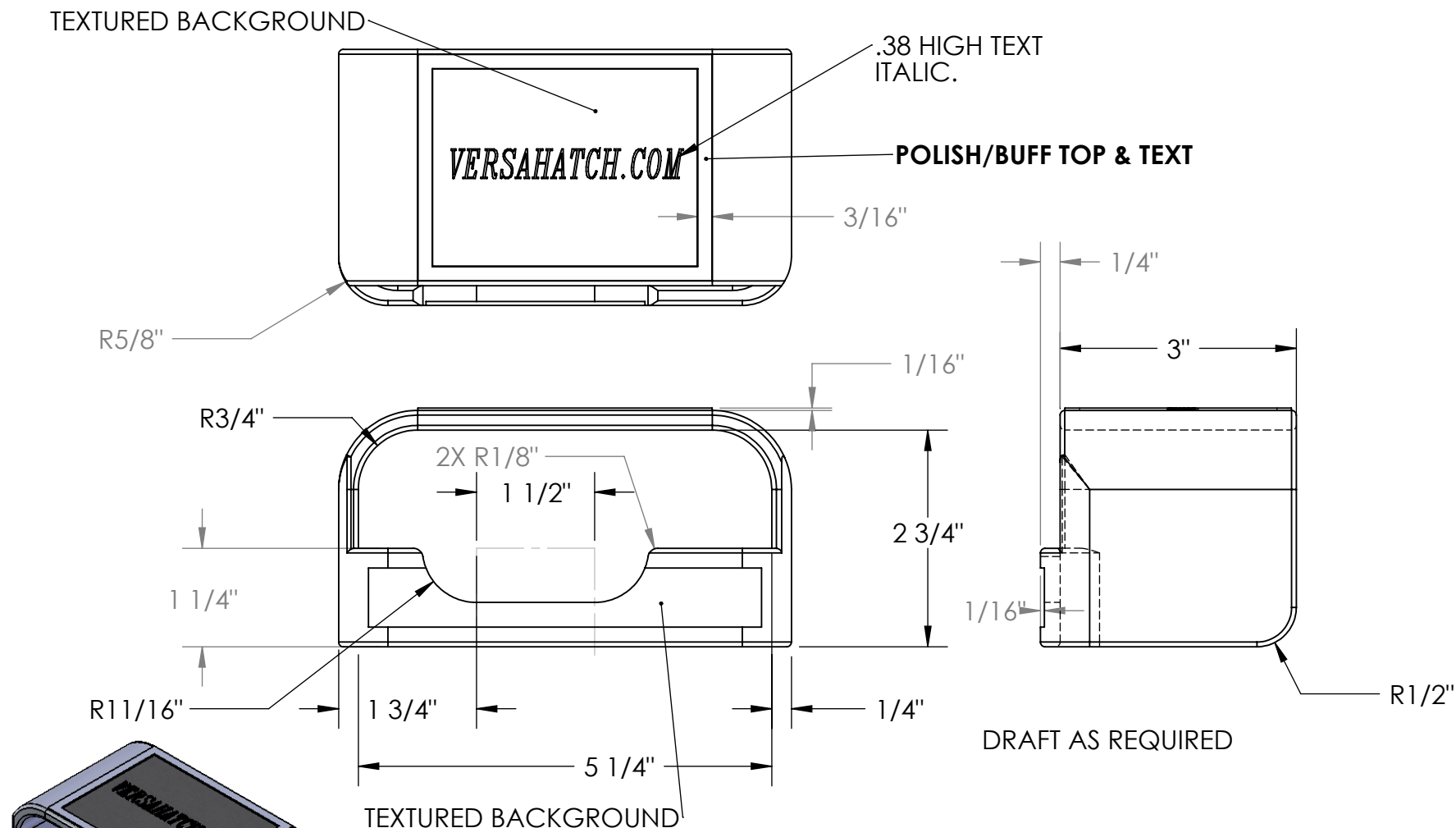


PART NUMBER	DESCRIPTION	MATERIAL	WEIGHT	STOCK SIZE
WEB-1000576	PADLOCK GUARD, CAST	CAST ALUMINUM	1	



**PROPRIETARY AND CONFIDENTIAL**

THE INFORMATION CONTAINED IN THIS DRAWING IS THE SOLE PROPERTY OF VERSA-STEEL, INC. ANY REPRODUCTION IN PART OR AS A WHOLE WITHOUT THE WRITTEN PERMISSION OF VERSA-STEEL, INC. IS PROHIBITED.

DIMENSIONS ARE IN INCHES  
TOLERANCES:

X.XX ± 0.020"  
X.XXX ± 0.005"

UNLESS NOTED

MATERIAL  
**CAST ALUMINUM**

FINISH

DO NOT SCALE DRAWING

	NAME	DATE
DRAWN	E.BAILIFF	2010-03-08
CHECKED		
ENG APPR.		
MFG APPR.		
Q.A.		

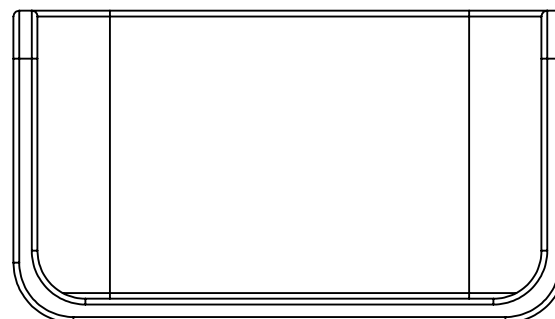
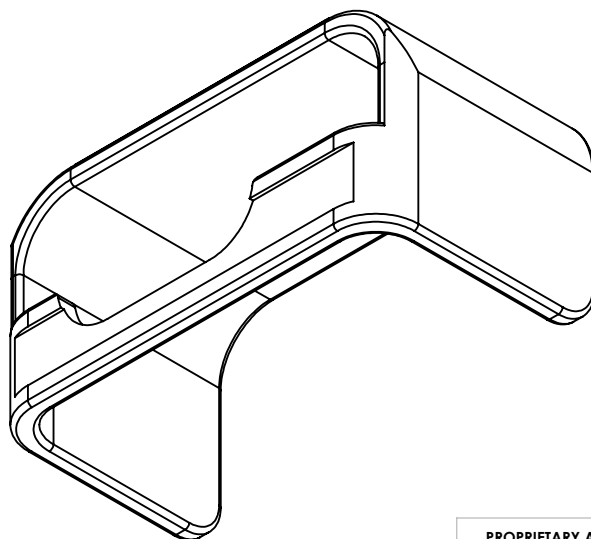
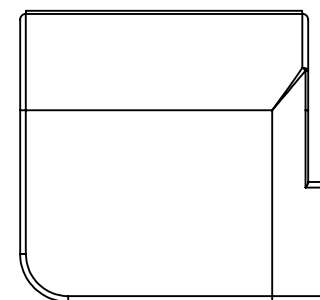
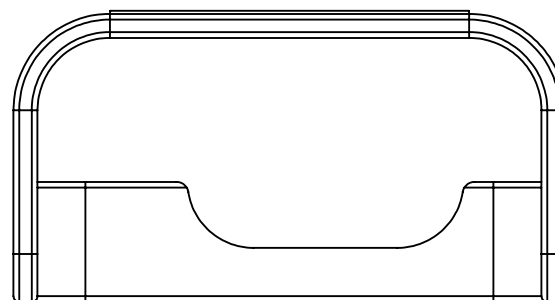
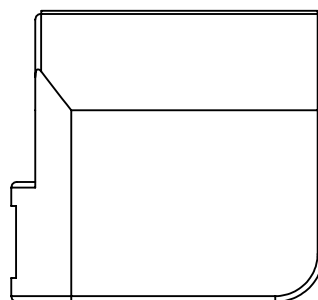
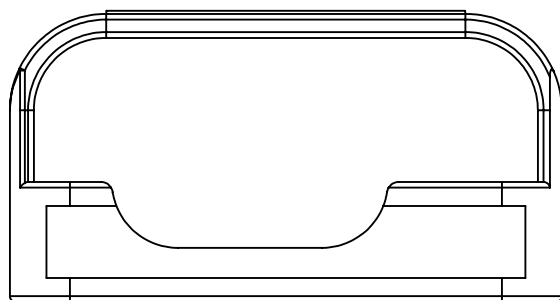
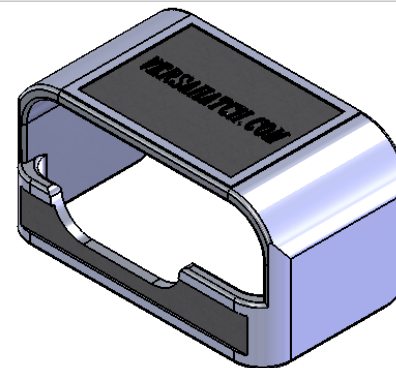
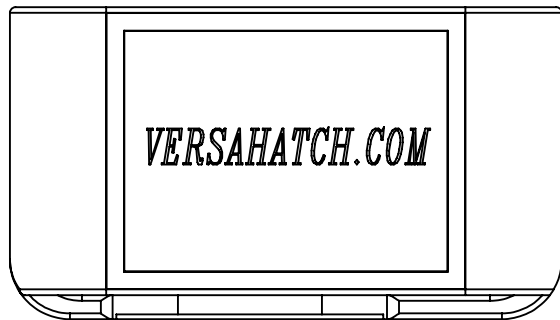
COMMENTS:

**Versa-Steel, Inc**  
Portland, Oregon USA  
Ph 503-287-9822

Description: PADLOCK GUARD, CAST

Part Number: WEB-1000576

SIZE	DWG. NO.	REV.
<b>A</b>	1 of 1	<b>E</b>
SCALE: 1:1	WEIGHT: 0.27 LBS	SHEET 1 OF 2



**PROPRIETARY AND CONFIDENTIAL**

THE INFORMATION CONTAINED IN THIS DRAWING IS THE SOLE PROPERTY OF VERSA-STEEL, INC. ANY REPRODUCTION IN PART OR AS A WHOLE WITHOUT THE WRITTEN PERMISSION OF VERSA-STEEL, INC. IS PROHIBITED.

DIMENSIONS ARE IN INCHES  
TOLERANCES:

X.XX ± 0.020"  
X.XXX ± 0.005"

UNLESS NOTED

MATERIAL  
**CAST ALUMINUM**

FINISH

DO NOT SCALE DRAWING

	NAME	DATE
DRAWN	E.BAILIFF	2010-03-08
CHECKED		
ENG APPR.		
MFG APPR.		
Q.A.		

COMMENTS:

**Versa-Steel, Inc**  
Portland, Oregon USA  
Ph 503-287-9822

Description: PADLOCK GUARD, CAST

Part Number: 1000576

SIZE	DWG. NO.	REV.
<b>A</b>	WEB-1000576	<b>E</b>
SCALE: 1:2	WEIGHT: 1 LBS	SHEET 2 OF 2