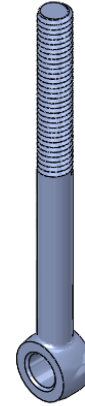
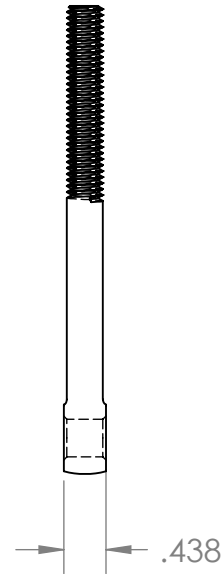
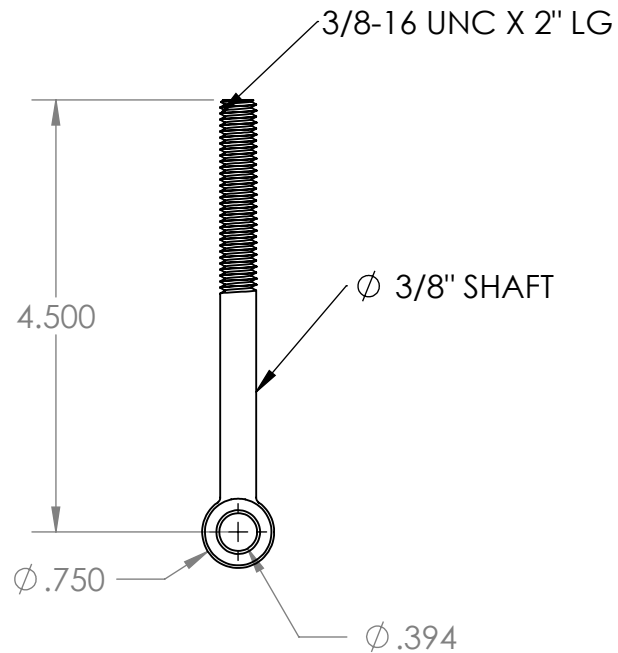


PART NUMBER	Description	Material	Weight	Inventory	Location	Vendor
1000059	ROD END 3/8" ID X 3/4" OD X 4 1/2" LG W/ 3/8-16 THRD X 2" LG	AISI 316	0.15	Yes	VS1	VERSA STEEL, INC.



PROPRIETARY AND CONFIDENTIAL

THE INFORMATION CONTAINED IN THIS DRAWING IS THE SOLE PROPERTY OF VERSA-STEEL, INC. ANY REPRODUCTION IN PART OR AS A WHOLE WITHOUT THE WRITTEN PERMISSION OF VERSA-STEEL, INC. IS PROHIBITED.

DIMENSIONS ARE IN INCHES
TOLERANCES:

1/X ± 1/16"
.XX ± .01
.XXX ± .003
.XXXX ± .0005

MATERIAL
AISI 316

FINISH

DO NOT SCALE DRAWING

	NAME	DATE
DRAWN	TAC	2008-09-25
CHECKED		
ENG APPR.		
MFG APPR.		
Q.A.		

COMMENTS:

Versa-Steel, Inc
Portland, Oregon USA
Ph 503-287-9822

Description:
ROD END 3/8" ID X 3/4" OD X 4 1/2" LG W/ 3/8-16 THRD X 2" LG

Part Number: 1000059

SIZE A	DWG. NO. 1 of 1	REV. B
SCALE: 1:2	WEIGHT: 0.15 Lbs.	SHEET 1 OF 1

NOTE: (1) PART QUANTITIES: FOUND ON MAIN ASSEMBLY PARTS BOM (2) WHERE USED: FOUND ON MAIN ASSEMBLY INDENTED BOM (3) SUB ASSEMBLY QUANTITIES: FOUND ON ASSY BOM